

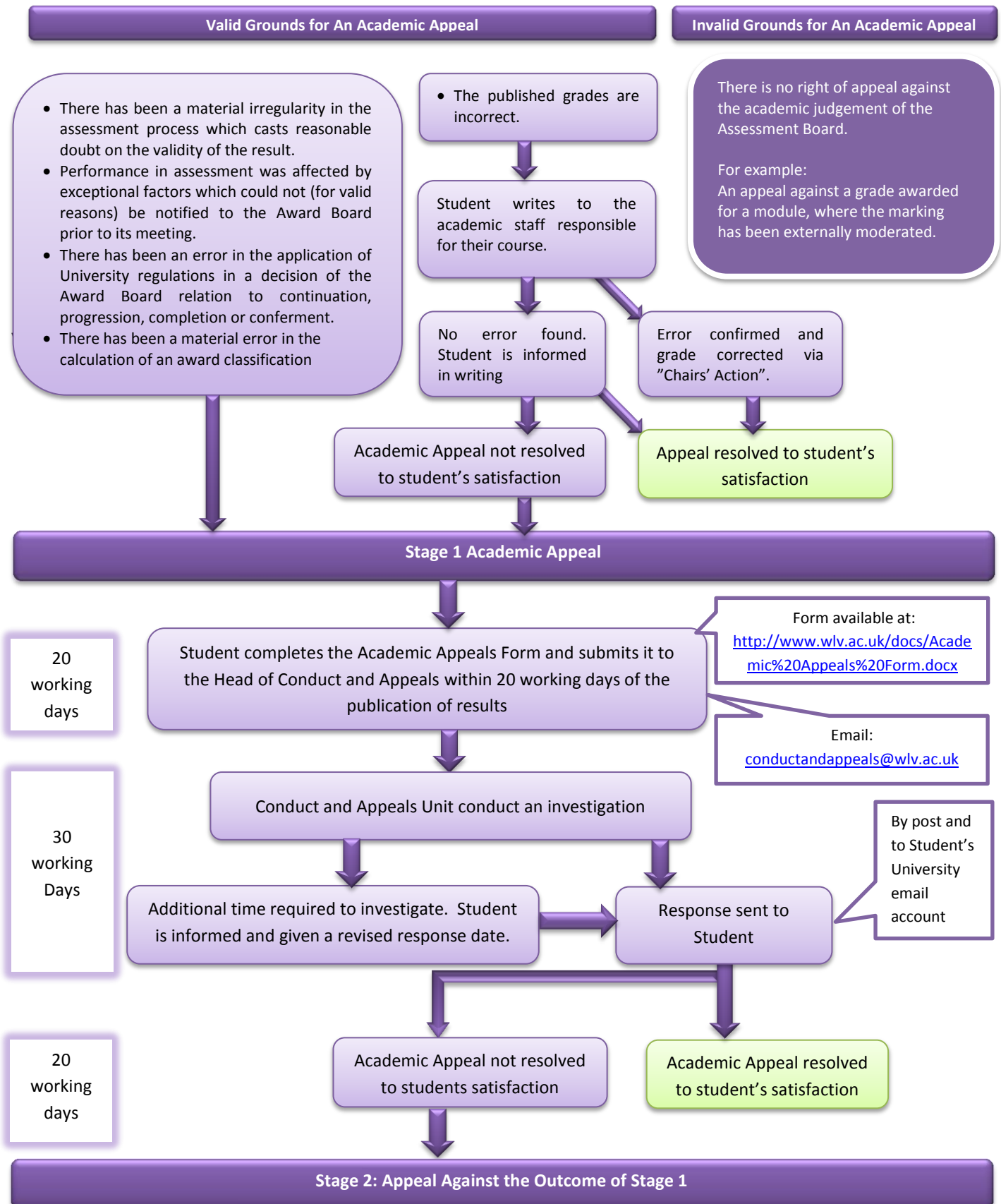
University of Wolverhampton Academic Appeals: Flow Chart

The University Academic Appeals procedure applies only to the decisions of Assessment Boards of the University.

Appeals must be lodged within 20 working days of the publication of results.

Full details on the Regulations and Procedure for Academic Appeals can be found at:

<http://www.wlv.ac.uk/pdf/Regulations%20and%20Procedure%20for%20Academic%20Appeals.pdf>

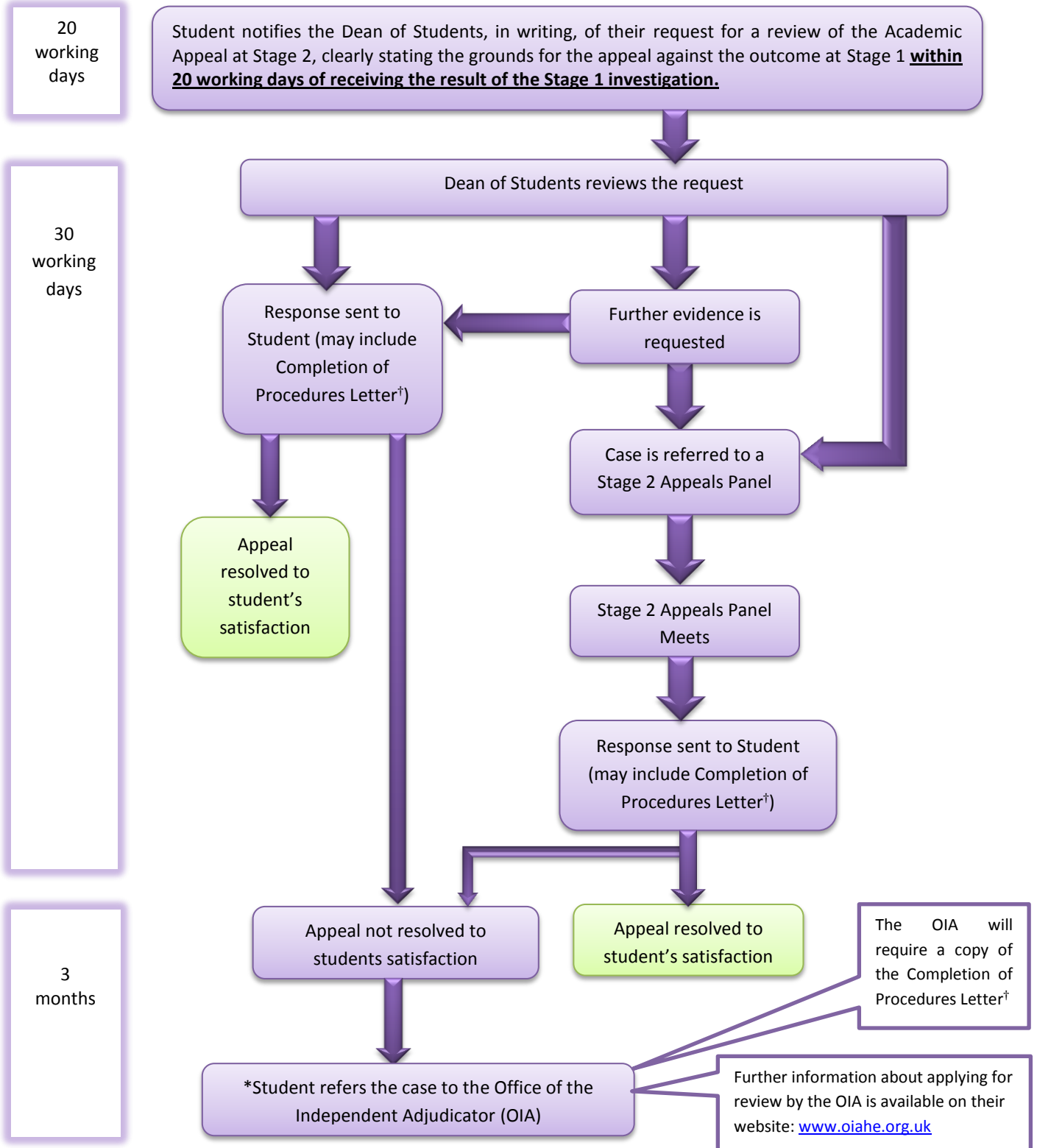


**University of Wolverhampton
Academic Appeals: Flow Chart**

Stage 2: Appeal Against the Outcome of Stage 1

Valid grounds for an appeal against the outcome at Stage 1

- That an administrative error or material irregularity has occurred in the conduct of the investigation.
- That there were undisclosed personal circumstances which the student believes would have affected the decision taken at Stage 1. The student must have a good reason not to have disclosed these circumstances at Stage 1



† A Completion of Procedures Letter is issued when all stages of the University procedures have been exhausted

* Referral to the OIA must be made within 3 months of the date of the Completion of Procedures Letter