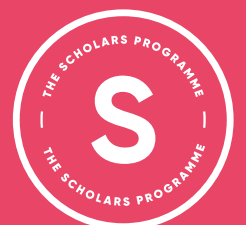


**The
Scholars
Programme**



Information for Researchers

Widening access to highly-selective universities for pupils from under-represented groups



What is The Brilliant Club?

What is The Brilliant Club?

The Brilliant Club is an award-winning charity that exists to widen access to highly-selective universities for underrepresented groups, by mobilising researchers to bring academic expertise into state schools. Our vision is an education system in which young people from underrepresented backgrounds are proportionately represented at highly-selective universities. In order to meet our aims, we recruit, train and place doctoral and postdoctoral researchers in schools and sixth form colleges to deliver programmes of university-style tutorials to small groups of pupils. Through The Scholars Programme, pupils develop the knowledge, skills and ambition that help them to secure places at highly-selective universities.

Working with universities

The Brilliant Club is building a national movement to mobilise doctoral and postdoctoral researchers to engage with non-selective state schools, to address educational disadvantage and increase fair access to highly-selective universities. We aim to build effective, lasting and meaningful links between schools and universities that are underpinned by excellent teaching and learning, interaction with university representatives and trips to the UK's leading higher

education institutions. At the moment, we are in partnership with over 30 universities across the country and work with over 10,000 pupils every year.

Working with PhD Tutors

The Brilliant Club recruits PhD tutors to work with pupils in schools across the country. We believe that doctoral and postdoctoral researchers are ideally placed to deliver on our mission of increasing access to highly-selective universities as they are:

- Experts in their field of research
- Champions of academic excellence
- Academically articulate
- Passionate about their subject
- Aware of the characteristics and skills universities look for in undergraduates

In the past four years, we have worked with over 1,000 PhD and postdoctoral researchers and we accept applications from universities all over the world. Our aim is that working with The Brilliant Club not only allows researchers to have an impact on widening access, but will also supplement their PhD studies, help them deliver on their public engagement remit and provide them with a paid, professional and well-regarded work experience opportunity.

What is a PhD Tutor?

Training and Course Preparation

Whilst you are part of The Brilliant Club delivering tutorials as a Scholars Programme PhD tutor, you will take part in our Researcher Development Programme. This involves training in teaching and widening participation, to develop you both as an academic within your institution, and as a widening participation professional. There are three training weekends every year, one preceding each round of placements. Attending the training weekend is a required part of taking up a placement. You can read more about our Researcher Development Programme for PhD tutors and the content of the training weekend on page 6. Course preparation varies by placement, and will include either designing a course based on your own research, or, for younger years, developing a pre-designed course developed by researchers and teachers.

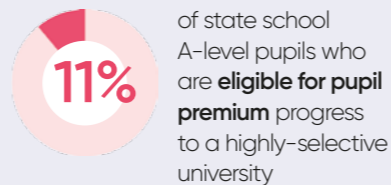
In-school Placement

In-school placements start with the attendance of a Launch Trip at a highly-selective university, where you will deliver your first tutorial to your pupils. You will work with two groups of 4-6 pupils in each school. You will then make four visits to a school, delivering two small group tutorials back to back. These are approximately half-day commitments, depending on the school

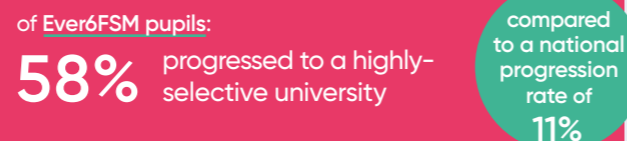
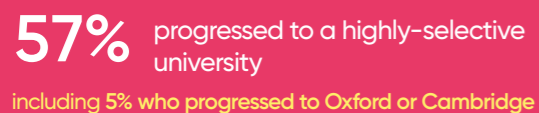
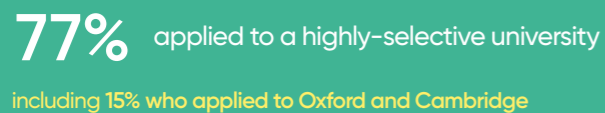
timetable and the PhD tutor's commute. PhD tutors are also asked to set homework and mark it. After five tutorials, pupils will submit their draft extended essay or problem sheet, which we call a final assignment. For your sixth tutorial, you will give pupils one-to-one feedback on their draft final assignment, again approximately a half day commitment. After the final assignment deadline, PhD tutors mark their pupils' work using university-style grading, and deliver marks to pupils in another one-to-one feedback tutorial. Finally, PhD tutors are invited, although not required, to attend the Graduation Event of their pupils at another highly-selective university.



The problem:



Our impact – of our 2015 Year 12 students:



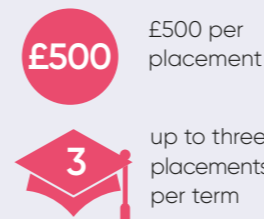
Our reach:



Locations and Payment

The Brilliant Club runs The Scholars Programme across England, Scotland and Wales. At the application stage, prospective PhD tutors can specify their preferred location or locations.

The dates and times that you will deliver in-school tutorials will be decided between you and your Programme Officer, who holds the relationships with the nominated Lead Teacher in the school. Tutorials can therefore be organised around your existing academic commitments.









We pay PhD tutors £500 on the completion of every placement undertaken, and also provide reasonable travel expenses. A PhD Tutor can take on up to three placements each term, earning £500 per placement and so up to £1,500 per

term. Each placement undertaken represents about 20-22 hours of contact time with pupils. Further to this, there is an estimated 25-35 hours of course preparation, tutorial planning and marking. Potential PhD tutors should seek their supervisor's permission to take part in the programme.

By applying to The Brilliant Club, you are not committing to a specific placement, and you will be able to confirm both during and after the assessment process your ability to be placed for the coming terms. We will check in with you at the end of each term to see whether you are available for upcoming placements over the upcoming term, and there is no mandatory number of placements to complete.



The Scholars Programme – An Overview

Terms	Pupils	Tutorials	Courses
 <p>Autumn and Spring Terms</p> <p>Autumn: Training weekend: 9/10 Sep Oct: launch trips Nov and Dec: tutorials Jan: feedback tutorial Feb: graduation event</p> <p>Spring: Training weekend: 18/19 Nov Jan: launch trips Feb and Mar: tutorials Apr: feedback tutorial Apr and May: graduation event</p>	<p>Years 9/10 Ages 13-15</p>	<p>12 pupils 60 minute tutorials 2,000 word final assignment or equivalent problem set</p> <p>2,000 words</p>	<p>PhD Tutor designed programmes Past examples include:</p> <p>Propaganda Posters in Mao Zedong's China</p> <p>The Neuroscience of Language</p> <p>Could you predict aircraft failure?</p> <p>Ghosts, Mothers and Women's Writing in Contemporary Spain</p> <p>Superbugs to Green Tea: An Introduction to Microbiology</p> <p>Numbers to the Rescue! Mathematics for Science Problems</p>  
 <p>Summer Term</p> <p>Training weekend: 24/25 Feb Mar: launch trips Apr and May: tutorials Jun: feedback tutorial Jul: graduation event</p>	<p>Year 12 Ages 16-18</p>	<p>8 pupils 75 minute tutorials 2,500 word final assignment or equivalent problem set</p> <p>8 pupils</p>	
	<p>Year 5/6 Ages 10-12</p>	<p>12 pupils 60 minute tutorials 1,000 word final assignment or equivalent problem set</p> <p>1,000 words</p>	<p>Predesigned courses for delivery in Maths, Biology, Engineering, Chemistry, History of Art, Geography, History, English, Law and Philosophy</p>  
	<p>Year 7/8 Ages 12-14</p>	<p>12 pupils 60 minute tutorials 1,500 word final assignment or equivalent problem set</p> <p>60 mins</p>	

PhD Tutor Experiences



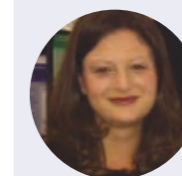
Shivashkar Singh,
University of Oxford

“ Through my involvement, I feel that I am able to do my small part in alleviating this problem, and at the same time, get the knowledge and skills that are required to make an even larger impact in the future. I have completed two placements; one where I taught mathematics to KS3 students and the other where I had taught my own course entitled “Thinking like a Chemical Engineer” to KS5 students. The difference in ages and school environments provided entirely different experiences, and a useful insight into widening participation. to solve the problem of fair access.



Katy Lister,
University of Leeds

“ I was not sure what to expect from 14 and 15 year olds, but I have been so impressed and have thoroughly enjoyed my time with them. I structured the tutorials around a student centred model of teaching and allowed debate to inform most of our time together. I would raise an issue for discussion, such as social revolution or the meaning of freedom, and use a Roman poet and their work to contextualise this point. The students had so much to say and were always open to debate and discussion.



Emma Vines,
University of East Anglia

“ I have just finished my first placement working with Year 5 and 6 students. Pupils attended an initial launch trip at the University of Cambridge, followed by five weekly tutorials based on the Philosophy course entitled: ‘What is Fairness?’ Throughout tutorials, I have been overwhelmed by the ability and maturity of younger pupils, particularly their ability to communicate, reflect and think critically about new and often complex issues.

Researcher Development Programme 2017-18

When you work with The Brilliant Club you join our Researcher Development Programme (RDP), which is made up of ongoing training and the development of skills through your in-school placement. Our training and placements are designed to align with the Vitae Researcher Development Framework to help build up researchers' skills and capabilities whilst complementing their academic work. Our staff is made up of former teachers and academics, and we have developed our Researcher Development Programme to meet the UK Professional Standards Framework for teaching and supporting learning in higher education.

Benefits of participation in the RDP

1. Dissemination of research

Universities and Research Councils increasingly demand that their doctoral and postdoctoral researchers explore ways of disseminating their research to a non-expert audience. The Brilliant Club offers researchers the opportunity to consider how to pitch their research at different levels and provides a vehicle for its dissemination and for public engagement.

2. Experience of teaching and understanding of the UK education system

Many of our PhD tutors apply because they would like to know more about the UK education system, and to understand the background of the undergraduates that they teach at university. Our PhD tutors and the teachers in schools where they are placed often exchange best practice guidance on university and school-level teaching.

3. Skills for an academic career

Many researchers want to gain teaching experience and the work that PhD tutors do with The Brilliant Club is increasingly recognised by universities as a step towards an academic career. We build into the programme the opportunity for researchers to develop their engagement, influence, impact and personal effectiveness skills as recommended in the Vitae Researcher Development Framework.

4. Experience of widening participation and access

Academic employers take a holistic approach to recruiting junior members of their faculty, and increasingly consider elements such as teaching experience, public engagement and involvement in schemes like The Brilliant Club in addition to factors such as publication and funding.

5. Employability skills

Working with The Brilliant Club helps researchers develop transferable skills, such as communication, leadership and collaboration, as well as gaining work experience outside of academia.

6. Collaboration and community

By joining The Brilliant Club, our PhD tutors become part of a cohort of like-minded researchers. They often co-operate with their peers, sometimes from different universities, on programme design and share best practice and experiences at events such as annual conferences. The Brilliant Club also organises a series of social events throughout the year.

7. Remuneration

PhD tutors are paid £500 per placement, and can complete three placements per term. The Brilliant Club covers reasonable travel expenses.

A typical RDP training weekend

All PhD tutors take part in a weekend of intense pedagogical training before each placement, with three training weekends offered throughout the year. Our training weekends are currently hosted in London, Bristol and Manchester, and reasonable travel and accommodation expenses are paid for by The Brilliant Club by researchers travelling from significantly outside of those cities. A typical training weekend would consist of the following components:

Widening participation and outreach experience

- Sessions supporting researchers to think about how to **engage the public with their research**
- **Workshops** on social enterprises, the charity sector and working in education
- An introduction to the pupils, schools and teachers that we work with
- The opportunity to hear from experienced PhD tutors on their motivations, advice and their time in school

Training delivered by qualified teachers and PhD graduates

- Beginners and advanced training on contemporary methods of teaching
- Keynote speeches and interactions with **top UK educational figures and researchers**
- Speeches and thoughts shared by current Brilliant Club teachers in schools across the country
- Numerous opportunities to **network** and share **best practice** with like-minded researchers and teachers

Teaching and course design experience

- Preparation for teaching small groups of students over a series of five small-group and two one-to-one tutorials
- Tailored individual support to design **effective tutorial plans** and create appropriate and useful resources

Elective Sessions

- **In-depth** sessions chosen by PhD tutors to tailor aspects of their training to their professional development.
- These cover practical teaching topics such as our popular session 'Don't waste a minute – how to use a short amount of time to your advantage in an hour-long tutorial', subject-specific boosters for STEM, Arts and Humanities and Social Sciences, and detailed explorations of the current issues in the area of widening participation.

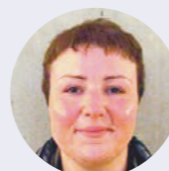
92% of PhD tutors rated the overall weekend as good or excellent

99% of PhD tutors rated the community and atmosphere as good or excellent

97% of PhD tutors agreed or strongly agreed that the electives catered for their professional development needs

Partner Universities

We accept applications from PhD tutors affiliated with universities across the world, as well as those who have completed their doctoral research and are not currently affiliated with an HE institution. In the UK we work closely with over 30 universities to support their widening participation and researcher development aims.



“The Brilliant Club has brought University College London's ethos of research-based learning to younger audiences, stretching them to their academic limits, building up their knowledge and pushing them in research topics that are not normally taught until undergraduate level.”

Dr Elpida Makrygianni, Education, University College London



“The Brilliant Club's model is both innovative and impactful and closely articulates with the widening participation objectives of the University of Cambridge. Best of all, they 'get' the WP context and particular challenges of highly selective universities, which is vital to effective partnership.”

Tom Levinson, Head of Widening Participation at Cambridge University



“By building a movement to mobilise the postgraduate community and engage them with challenging schools, The Brilliant Club is already improving access to top universities. More than this, they are taking real steps towards a cultural shift in this country's education system that help address educational disadvantage by bridging the gap between school and university.”

Dr Fiona Spensley, Senior Tutor and Tutor for Admissions, Lady Margaret Hall, University of Oxford



How to Apply

To work as a PhD tutor with us, please visit our website and look at our Researchers tab. You will find there details of upcoming recruitment events, our application form and application guidance. Please complete the application form, which will then be reviewed by a member of The Scholars Programme team. If your application is successful, you will then be invited to an assessment centre convenient for you.

The assessment centre consists of four activities: i) a mini lesson delivered to two Brilliant Club assessors, ii) a written evaluation of your mini lesson, iii) a group activity, and iv) a short interview. You will be required to attend for roughly two hours. Assessment centres take place throughout the year. Our application process is open throughout the year, and when all placements for a programme have been filled, any existing applications will roll over to the next set of placements.

If you have any queries regarding the organisation, the opportunity to work as a Brilliant Club PhD Tutor or the application process please send us an email at: apply@thebrilliantclub.org.

If you would like to speak to us then please feel free to call our Head Office on 020 7921 4540. To read more about The Brilliant Club, visit thebrilliantclub.org.

Complete The Brilliant Club application (online)

Successful candidates invited to an Assessment Centre

Assessment Centre
(Approximately two hours)

Mini lesson

Interview

Group Activity

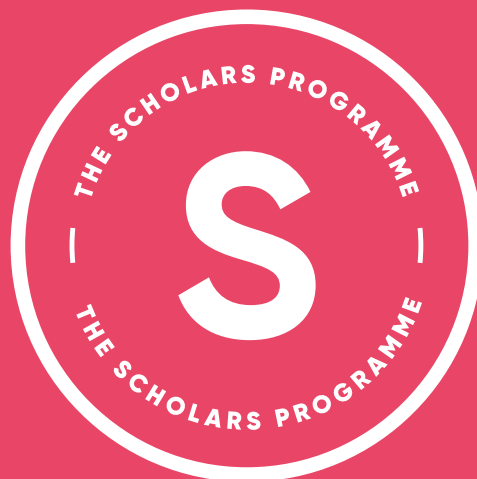
Self-evaluation

Feedback

If successful, placed in pool of PhD tutors

Allocated a placement as soon as possible

The Brilliant Club's Partner Universities



thebrilliantclub.org